



MATCHDAY



**STOTFOLD
RESERVES**

VS



**NEW BRADWELL
ST PETER**

20 SEPTEMBER 2025

JSJ STADIUM

15:00 KICK OFF

#up the fold

enchanted
DAY NURSERY

STOTFOLD FC CLUB OFFICIALS

2025 / 26

DIRECTORS

JULIE LONGHURST, ROB PARKIN, BRIAN SAUNDERS AND JOHN TALBOT

PRESIDENT: TED SAUNDERS

CHAIRPERSON: ROB PARKIN

VICE-CHAIRPERSON: VACANT

TREASURER: VACANT

FOOTBALL/FIXTURE SECRETARY: JULIE LONGHURST

COMMERCIAL MANAGER: PAUL BLUNT

CLUB WELFARE OFFICER: BRENDA SAUNDERS

KIT MANAGER: DENISE PARKIN

HOSPITALITY MANAGER: DENISE PARKIN

EVENTS MANAGER: VACANT

HEAD STEWARDS: DUNCAN NIGHTINGALE AND PAUL BLUNT

PROGRAMME EDITOR: -BONNI WOODWARD

CLUB SAFETY OFFICER: STEPH BLUNT

WEBMASTER: LORNA TEARLE

SOCIAL MEDIA CO-ORDINATOR: -DARREN TEARLE

CLUB AMBASSADOR: JOHN ALDRIN AND JOHN TALBOT

JUNIOR SECTION REPRESENTATIVE: CHRIS MURRAY

COMMITTEE MEMBERS:

SHEILA ALDRIN, DAMIAN LEVY, CHRIS AND JOHN MORRELL, BEN NIGHTINGALE AND BRIAN SAUNDERS

STOTFOLD FOOTBALL CLUB IS A MEMBERS CLUB. ALL POSITIONS ABOVE ARE ELECTED ANNUALLY BY COMMITTEE MEMBERS OF THE CLUB AT THE ANNUAL GENERAL MEETING WHICH IS HELD IN JULY OF EACH YEAR.

IF YOU WISH TO CONTACT STOTFOLD FC PLEASE VIST WWW.STOTFOLDFC.CO.UK

RESERVE TEAM MANAGER JON LITTLE



TODAY WE WELCOME NEW BRADWELL TO THE JSJ STADIUM.

WE COME INTO TODAY ON THE BACK OF 2 AWAY WINS AND ONE AWAY LOSS SINCE THE 1-0 DEFEAT HERE TO LEAGUE LEADERS EVERETT, WHICH SEEMS ALONG TIME AGO NOW. THE AWAY DEFEAT WAS TO DESBOROUGH WHERE WE LEAD 1-0 UNTIL THE 60TH MINUTE AND THEN FELL APART AFTER DESBOROUGH EQUALISED AND ENDED UP SOMEHOW LOSING 4-1. LAST SATURDAY WE WENT TO THE TEAM AT THE BOTTOM OF THE LEAGUE AND GOT THE WIN THE GROUP NEEDED, REGARDLESS OF HOW WE GOT IT WE NEEDED THAT WIN. THEN TUESDAY AT LONDON COLNEY WE

FINALLY TURNED UP WITH OUR BEST PERFORMANCE OF THE SEASON SO FAR WITH A 4-1 VICTORY. IT WASN'T THE SCORELINE OR THE VICTORY THAT PLEASED ME BUT IT WAS THE WAY WE PLAYED AND TO BE HONEST IT SHOULD HAVE BEEN 7-8. I CAN'T PUT MY FINGER ON IT BUT THE PENNY JUST SEEMED TO DROP ON TUESDAY AND THE BOYS ATTITUDE, DESIRE, ENERGY AND ABILITY ALL SHONE THROUGH AS A SQUAD. I REALLY HOPE THAT'S A CORNER TURNED FOR US AS WE HAVE HAD A NIGHTMARE OF A START TO OUR SEASON FOR VARIOUS REASONS BUT OUR BIGGEST PROBLEM HAS BEEN OUR HORRENDOUS SERIOUS INJURY LIST. LAST WEEK WE ADDED ALFIE WITH A FRACTURED FOOT TO BARRA'S FRACTURED ANKLE AND BILLY'S HORRIFIC LONG TERM ACL INJURY. THIS COUPLED WITH BAZZA AND MULLS BEING OUT IT'S BEEN TOUGH AS A MANAGEMENT TEAM TO SAY THE LEAST. WE HOPE TO HAVE BARRA AND ALFIE BACK IN APPROX 6 WEEKS AS WELL AS MULLS BEING CLOSE TO RETURNING BUT AS HIS MANAGER AND OF COURSE HIS DAD BILLS ONE IS A DIFFICULT ONE TO TAKE. AS A CLUB WE WILL DO ALL WE CAN TO SUPPORT BILLY AND THE SHORT/MEDIUM TERM INJURED BOYS AND GET THEM BACK PLAYING TO THE VERY BEST OF THEIR ABILITY.

ANYWAYS HAPPIER NEWS IS THE FIRTS SEEMED TO HAVE TURNED A CORNER AND ON A PERSONAL LEVEL I'M CHUFFED FOR EDDIE AND HIS STAFF TO GET FIRST AND FOREMOST SOME POINTS ON THE BOARD BUT ALSO THE IMPROVED PERFORMANCES NOW GIVES THEM SOMETHING TO BUILD ON.

LET'S HOPE TODAY WE CAN BUILD ON OUR LAST TWO VICTORIES AND NOW GO ON AND PUT A RUN TOGETHER TO GET US UP THIS LEAGUE.

#UPTHEFOLD

JON



enchan^{ted}

DAY NURSERY



INFO@ENCHANTEDDAYNURSERY.CO.UK



01462 417382



1AQ KNAP CLOSE, LETCHWORTH GARDEN CITY

LEARNING WITH IMAGINATION



A VIEW FROM THE CHAIR

ROB PARKIN



“Good, better, best. Never let it rest. ‘Til your good is better and your better is best.”

GOOD AFTERNOON EVERYONE AND A VERY WARM WELCOME TO THE JSJ STADIUM TO YOU ALL. I WOULD ALSO LIKE TO EXTEND A VERY WARM WELCOME TO NEW BRADWELL ST PETER, ALL THEIR PLAYERS, MANAGEMENT, SUPPORTERS, COMMITTEE & EVERYONE WHO HAS COME ALONG THIS AFTERNOON. ALL AT SFC HOPE YOU ENJOY YOUR TIME WITH US. FORTUNES HAVE TURNED AROUND FOR OUR RESERVE TEAM AFTER 3 DEFEATS ON THE BOUNCE WITH THEM HITTING BACK WITH 2 CONSECUTIVE WINS ON THE ROAD. THE FIRST WAS AWAY TO HUNTINGDON TOWN TWICE TAKING OUR CHANCES FROM THE PENALTY SPOT TO SECURE A 2-1 WIN AND LAST TUESDAY EVENING WITH AN EXCELLENT DISPLAY AGAINST LONDON COLNEY RUNNING OUT 4-1 WINNERS ON THE NIGHT.

FOLLOWING SCANS IT HAS NOW BEEN CONFIRMED THAT BILLY LITTLE HAS SUFFERED AN ACL INJURY WHICH WILL REQUIRE SURGERY. THIS IS VEY DISAPPOINTING NEWS WHICH MEANS BILLY WILL BE OUT FOR THE REST OF THE SEASON AND POTENTIALLY THE START OF NEXT SEASON. WE ALL WISH BILLY WELL AND A SPEEDY RECOVERY. JOINING THE INJURY LIST IS LUKE BARANOWSKI WHO SUFFERED A FRACTURED ANKLE IN THE HOME GAME AGAINST EVERETT ROVERS. LUKE WILL BE OUT FOR SOME TIME AND WE HOPE TO SEE HIM BACK AGAIN THIS SEASON LEADING OUR FRONT LINE. AGAIN WE ALL WISH LUKE WELL AND A SPEEDY RECOVERY.

TODAYS OPPONENTS SIT TWO PLACES ABOVE US IN THE TABLE AND ONE POINT THE BETTER ALTHOUGH HAVING PLAYED 2 FEWER GAMES. WITH CONFIDENCE HIGH IN OUR CAMP, HOME ADVANTAGE I AM SURE WE ARE IN FOR A HARD GAME BUT ONE WE WILL BE LOOKING TO WIN.

LOOKING AT OUR FIXTURES THEY ARE NOT IDEAL AND WE HAVE A NUMBER OF TUESDAY EVENING GAMES COMING UP. STARTING ON 23RD SEPT AWAY TO EATON SOCON. THIS LEAVES US WITH FREE SATURDAYS ON 27TH SEPT, 11TH & 18TH OCT. I REALLY DON'T UNDERSTAND WHY OR HOW THESE FIXTURES ARE PUT TOGETHER AND I APPRECIATE THE NEED TO POSSIBLY GET GAMES COMPLETED TO ACCOMMODATE POTENTIAL POSTPONED GAMES. HOWEVER, THOSE WHO PUT THE FIXTURES TOGETHER I FEEL REALLY NEED TO BETTER UNDERSTAND THE FINANCIAL IMPACT ON CLUBS BY HOLDING MIDWEEK FIXTURES AS ON AVERAGE WE GET 30% FEWER PEOPLE ATTEND WHICH IMPACTS ON GATE RECEIPTS AND BAR TAKINGS. ALSO PLAYER AVAILABILITY AND TRAVEL NEEDS TO BE TAKEN INTO CONSIDERATION, AS THEIR WORK COMMITMENTS MUST TAKE PREFERENCE. HAVING 3 FREE SATURDAYS IN THE NEXT 5 WEEKS AND 3 MIDWEEK GAMES IN MY VIEW IS UNACCEPTABLE!

A VIEW FROM THE CHAIR



WELL WITH ALL THAT SAID LETS GET BEHIND OUR TEAMS, WHENEVER THEY PLAY AND GIVE THEM ALL OUR SUPPORT. OUR 1ST TEAM TURNED THE CORNER LAST SATURDAY PICKING UP OUR FIRST POINTS WITH A WIN AGAINST MARLOW. IT WAS A GAME THAT I FELT WE CONTROLLED AND DESERVED TO WIN, YES WE HAD A LITTLE LUCK, BUT YOU HAVE TO TAKE IT WHEN IT COMES AROUND. FOLLOWING OUR DEFEAT AGAINST BIGGLESWADE FC IN THE BEDS SENIOR CUP HAVING TRAILED 4-0 AT THE BREAK AND GETTING A 94TH MIN EQUALISER THEN UNFORTUNATELY GOING OUT 5-4 ON PENALTIES EDDIE WAS QUICK TO MAKE SOME SQUAD CHANGES. STANLY, BUCHANAN AND CLARKE HAVE ALL LEFT THE CLUB AND WE WISH THEM WELL AT THEIR NEXT CLUB. INCOMING IS MVIOKI, SEISAY, SIMPSON, EKONGO & OKEOWO WHO EDDIE WILL BE LOOKING AT STEADYING AND STRENGTHENING OUR BACK LINE AND MID-FIELD. EKONGO UNFORTUNATELY FOLLOWING THE BIGGLESWADE CUP GAME HAS HAD AN EMERGENCY APPENDIX OPERATION AND WILL BE SIDELINE UP TO POSSIBLY 6 WEEKS. ALL THE OTHERS FEATURED IN THE MARLOW GAME AND ACQUITTED THEMSELVES WELL AND HOPEFULLY THIS CONTINUES. TAKE A LOOK AT OUR SOCIAL MEDIA X PAGE TO SEE THE DETAILS OF EACH OF THE NEW SIGNINGS.

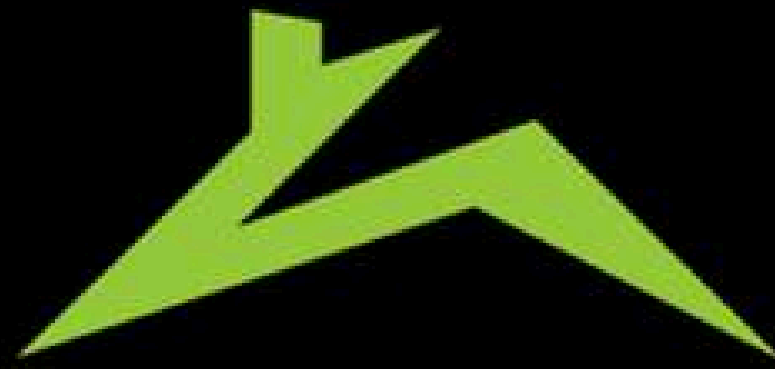
OUR WOMEN'S TEAM HAVE NOW STARTED THEIR SEASON HOSTING TOBY IN THE WOMEN'S FA CUP FIRST ROUND QUALIFYING A COUPLE OF SUNDAYS AGO. PROBABLY NOT THE BEST GAME TO START AGAINST A TEAM PLAYING A STEP HIGHER BUT WE ACQUITTED OURSELVES VERY WELL. 0-3 DOWN AT HALF TIME WE TOOK THE GAME TO TOBY IN THE SECOND HALF SCORING TO FINALLY END THE FIXTURE 1-3. WE FOLLOWED THIS WITH A HOME FIXTURE LAST SUNDAY HOSTING OAKLANDS WOLVES WOMEN AND UNFORTUNATELY WERE ON THE WRONG END OF THE RESULT LOOSING OUT 0-2. TOMORROW WE TRAVEL TO GARSTON LADIES FC FIRST WHO OPENED THEIR LEAGUE CAMPAIGN WITH A 2-2 DRAW AGAINST BERKHAMSTED LADIES.

ALSO KEEP A LOOK OUT ON OUR SOCIAL MEDIA PAGE TO SEE THE DETAILS OF OUR ANNUAL FIREWORKS DISPLAY. TRADITIONALLY WE HOLD OUR DISPLAY ON THE 5TH NOV AND IT IS AGAIN THIS YEAR. TICKET PRICES AND TIMES WILL BE PUBLISHED SOON.

PLEASE ENJOY THIS AFTERNOONS GAME AND LETS GET BEHIND THE TEAM. I THANK YOU FOR YOUR SUPPORT AND HAVE A SAFE JOURNEY HOME.

ROB PARKIN





RITESHIELD

ROOFING

Shielding your roof in a safe
affordable way providing
solutions to your roofing
problems.

Tel: 01462 417233

Email: info@riteshieldroofing.co.uk

Web: WWW.riteshieldroofing.co.uk





RESERVE
TEAM

#up the fold

SQUAD LIST



GURJOSH DHESI (GK)
BRADLEY SHAW
HARRY BUCKLEY (C)
ADAM TURNER
CHARLIE CANE
JONNY CRAWFORD
JOE FANTOM
TOM GODDARD
ALFIE GARDINER
BILLY LITTLE
CHARLIE BEDFORD
SAM HOPE
HARRY SMITH
CHARLIE SCOTT
CHARLIE MALLETT
CALLUM MULLINS
AARON HECTOR
OWEN HAYNES
DARAI LONG
TAYLON BROOKES
COREY LYNESS
DOMINIK ROBERTSON
EMMANUEL KUSI
DYLAN COLLETTI



SPARTAN SOUTH MIDLANDS LEAGUE

DIVISION ONE

SEASON 2025/26 LEAGUE TABLE



Pos	Team	P	W	D	L	F	A	GD	PTS
1	Everett Rovers	9	8	1	0	30	3	27	25
2	Cranfield United	10	7	1	2	32	13	19	22
3	Eaton Socon	8	7	0	1	17	6	11	21
4	Wellingborough Whitworth	10	6	2	2	23	12	11	20
5	Amphill Town	10	6	2	2	19	8	11	20
6	Desborough Town	10	5	2	3	19	11	8	17
7	Irchester United	9	5	1	3	21	15	6	16
8	New Bradwell St Peter	9	5	1	3	18	15	3	16
9	Long Buckby AFC	10	4	3	3	15	12	3	15
10	Stotfold Reserves	11	5	0	6	15	20	-5	15
11	Buckingham FC	9	4	2	3	14	10	4	14
12	Rushden & Higham United	9	4	2	3	17	14	3	14
13	Langford	10	4	2	4	15	18	-3	14
14	Belstone	9	4	1	4	18	9	9	13
15	Royston Town Reserves	10	4	1	5	13	18	-5	13
16	Leighton Town Reserves	10	3	2	5	10	18	-8	11
17	Rothwell Corinthians	10	3	1	6	11	29	-18	10
18	London Colney	12	2	1	9	15	29	-14	7
19	Letchworth Garden City Eagles	10	1	3	6	9	22	-13	6
20	Shefford Town & Campton	9	0	2	7	2	18	-16	2
21	Huntingdon Town	12	0	2	10	14	47	-33	2

RECENT FORM:



Looking to promote your business within the local community?



Stotfold FC are delighted to offer a wide range of packages that will fit almost every marketing budget from pitch side boards, player kit branding through to our impressive main stand.

The JSJ Stadium can host over 2300 guests, and you will always get a warm welcome from our team.

For more details, please contact Paul Blunt paulblunt1961@hotmail.co.uk

Stotfold Football Club are widely regarded as one of the leading England Football Accredited clubs in the country and are located on the Herts/Beds border. (Affiliated to the Bedfordshire Football Association.)



www.fwpgroup.co.uk

fwp
architecture

Stadium Development Specialists



architecture • project management • structural engineering • interior design
building surveying • m&e design • quantity surveying • cdm consultancy



SPARTAN SOUTH MIDLANDS LEAGUE



DIVISION ONE SEASON 2025/26 UPCOMING FIXTURES

23.09.2025



EATON SOCON FC

04.10.2025



J5J STADIUM

07.10.2025



J5J STADIUM

14.10.2025



J5J STADIUM

25.10.2025



SERGEANTS LAWN

STOTFOLD MOTOR CENTRE INCORPORATING A1 SAUNDERS GARAGE

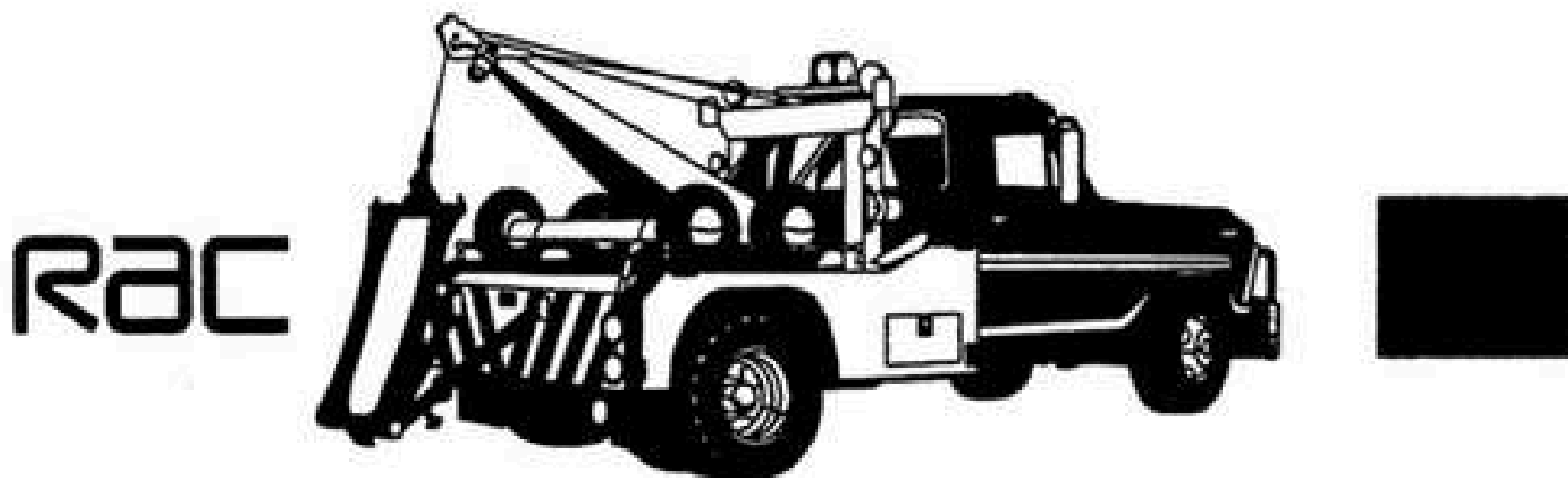
J & T SAUNDERS

28 ASTWICK ROAD STOTFOLD

TELEPHONE: HITCHIN 730222 / 730127

**LEADING BREAKDOWN CONTRACTORS FOR ALL
MOTOR VEHICLE ORGANISATIONS**

**OFFICIAL SPONSORS OF
STOTFOLD FOOTBALL CLUB**



**24 HOUR RESCUE AND BREAKDOWN SERVICE
CAR & HEAVY COMMERCIAL VEHICLES**

**MOT WHILE YOU WAIT
USED CAR SALES**

24 HOUR RADIO CONTROLLED RECOVERY SERVICE





FIRST

TEAM

#up the fold

SQUAD LIST

MANAGER

EDDIE MCLOUGHLIN

COACH

MATT COKER

STRENGTH &

CONDITIONING COACH

DARRYL REID

LEADERSHIP &

PERFORMANCE

COACH

MATT BALL

PHYSIO

JOE GREEN

ASSISTANT COACH

CARL SMITH

GOALKEEPER COACH

LOUIS O'NEILL

KITMAN

ROY RYALL

LEAD ANALYST

JACK CROFT

PLAYERS

**LIAM GOOCH (GK)
BRADLEY SHAW (GK)
JACK BROWN
SONNY GARDNER
JAMES PETERS
DEMPSEY THOMAS
FREDDIE STANLEY
JORDON STEWART
AARON DIVINEY
ALEX COPPIN
MITCHELL GOOCH
CORMAC CLARKE
ROBBIE BUCHANAN
CODI SPAVINS
LUCA CARDINES
DAN KEMP
JAMES KOSKY
JOSH KEANE
HENRY SNEE
LUCAS TITCHMARSH
JAMES EWINGTON**



PITCHING IN SOUTHERN LEAGUE



DIVISION ONE CENTRAL SEASON 2025/26 LEAGUE TABLE

Club	P	W	D	L	F	A	GD	-Pts	Pts
Biggleswade FC	5	4	1	-	9	2	7	-	13
Welwyn Garden City	6	4	-	2	8	6	2	-	12
Hadley	5	3	1	1	11	7	4	-	10
Biggleswade Town	4	3	1	-	8	4	4	-	10
Barton Rovers	4	3	1	-	6	2	4	-	10
Leighton Town	3	3	-	-	9	2	7	-	9
Ware	5	3	-	2	13	13	0	-	9
Beaconsfield Town	5	2	2	1	8	5	3	-	8
Flackwell Heath	3	2	1	-	7	1	6	-	7
Hitchin Town	4	2	1	1	5	2	3	-	7
Leverstock Green	5	2	1	2	9	10	-1	-	7
Hertford Town	2	2	-	-	4	0	4	-	6
AFC Dunstable	6	1	3	2	8	11	-3	-	6
Aylesbury United	5	1	2	2	6	8	-2	-	5
Enfield	3	1	-	2	6	6	0	-	3
Marlow	4	1	-	3	5	7	-2	-	3
Stotfold	5	1	-	4	10	15	-5	-	3
London Lions	5	1	-	4	5	10	-5	-	3
Rayners Lane	5	1	-	4	7	13	-6	-	3
Milton Keynes Irish	6	1	-	5	9	17	-8	-	3
Northwood	4	-	2	2	6	10	-4	-	2
Thame United	4	-	-	4	4	12	-8	-	0

RECENT FORM: **L** **L** **L** **W**



PITCHING IN SOUTHERN LEAGUE



DIVISION ONE CENTRAL SEASON 2025/26 UPCOMING FIXTURES

27.09.2025



ASM STADIUM

30.09.2025



JST STADIUM

04.10.2025



WILKS PARK

11.10.2025



JST STADIUM

15.10.2025



ENFIELD FC



STOTFOLD FC

Official Club Merchandise



T-SHIRT



£13.00

POLO



£16.00

SWEATSHIRT



£20.00

HOODED SWEAT



£30.00

STADIUM SCARF



£12.00

STADIUM BEANIE



£15.00

PRO-STYLE CAP



£15.00

**MORE NEW
LINES TO
BE ADDED**

Contact: John Talbot
07970 136751 or
john.talbot12@virginmedia.com
with your specific requirements.



STOTFOLD FC / JUNIORS FC LOTTERY CLUB



JUNIORS

One Club, One Community

JOIN OUR LOTTERY CLUB

For Only
£2.50 Per Week

Weekly Prize Draw

£50

Monthly Prize Draw

£150

Annual Jackpot

£2000

SUPPORT YOUR LOCAL CLUBS

Further details can also be found on our web site under Documents:

www.stotfoldfc.co.uk/clubdocuments.aspx



WOMEN'S

TEAM

#up the fold

SQUAD LIST

MANAGER & HEAD COACH

LAURENCE JACK

ASSISTANT MANAGER & GOALKEEPER COACH

BECCA LIGHTFOOT

COACH

ASHER SMITH

PLAYER REPRESENTATIVE

CHARLIE PETERS

PHYSIO

ELLIE SMITH

PLAYERS

**ORLAGH DALY (GK)
AMY JACK (C)
MAIZIE MARSH
NEIVE BUCKLEY
AMELIA BACON
BONNI WOODWARD
CHLOE KELLER
CHARLOTTE RYAN
KEIRA HOW
ESTELLE KLAUSNER
AMELIA KLAUSNER
FREYA TAYLOR-BURTON
NIA KOUMOUROU
CHARLIE PETERS**



BEDFORDSHIRE AND HERTFORDSHIRE WOMEN'S FOOTBALL LEAGUE

PREMIER DIVISION

SEASON 2025/26

UPCOMING FIXTURES

21.09.2025



METROPOLITAN POLICE BUSHEY
SPORTS CLUB

28.09.2025



JST STADIUM

05.10.2025



LANGFORD FC

12.10.2025



JST STADIUM

19.10.2025



REAL BEDFORD LADIES



BEDFORDSHIRE AND HERTFORDSHIRE WOMEN'S FOOTBALL LEAGUE

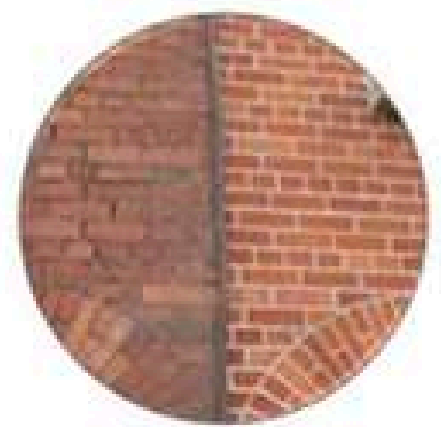
PREMIER DIVISION

SEASON 2025/26

LEAGUE TABLE



Pos	Team	P	W	D	L	GD	PTS
1	Ampthill Town Ladies	1	1	0	0	3	3
2	Oaklands Wolves Women	1	1	0	0	2	3
3	Berkhamsted FC Ladies	1	0	1	0	0	1
4	Garston Ladies FC First	1	0	1	0	0	1
5	AFC Welwyn AFC Welwyn Ladies	1	0	1	0	0	1
6	Wootton Blue Cross Lionesses Women	1	0	1	0	0	1
7	St Margaretsbury Ladies First	0	0	0	0	0	0
8	Ware United Football Club Ladies	0	0	0	0	0	0
9	Stotfold Women	1	0	0	1	-2	0
10	Langford Ladies	1	0	0	1	-3	0



NORTH HERTFORDSHIRE CONSTRUCTION LTD



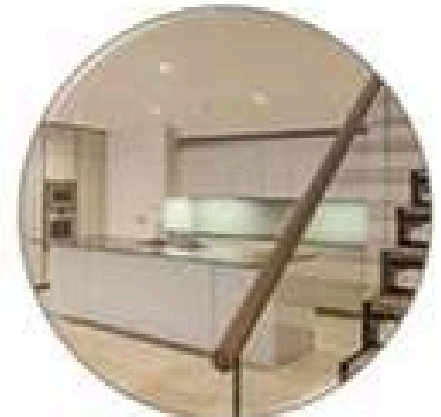
GET IN TOUCH

6 The Green
Stotfold
Hertfordshire
SG5 4AN

info@herts-construction.co.uk

accounts@herts-construction.co.uk

01462 732177 / 07824 662 894





CLUB

HISTORY

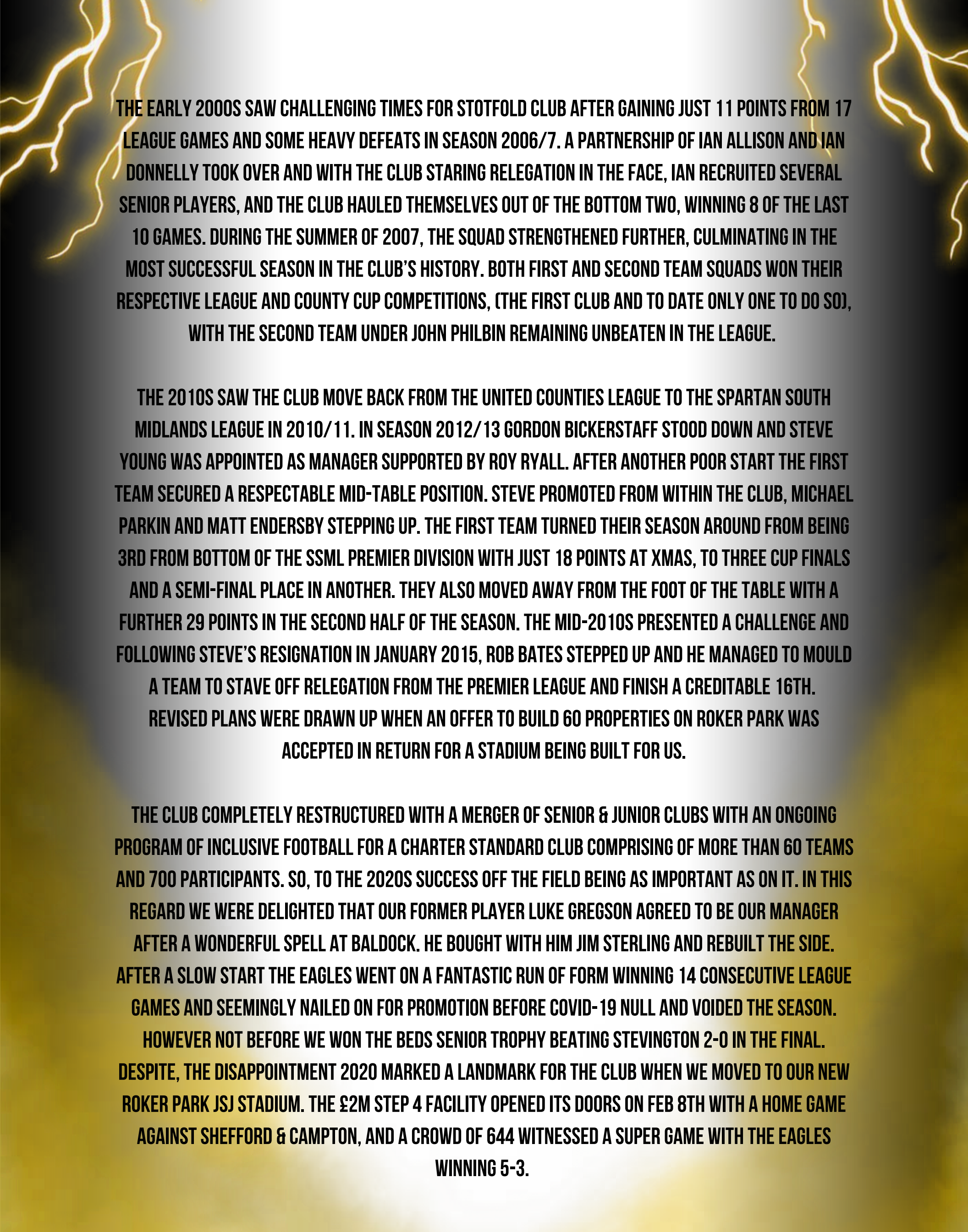
#up the fold

THE HOME TEAM

STOTFOLD

STOTFOLD IS A SMALL COUNTRY TOWN WITH A POPULATION IN THE REGION OF 9,000. IT IS SITUATED IN THE COUNTY OF BEDFORDSHIRE BUT BEING NEAR THE NORTH HERTS BORDER. THE FIRST RECORDED FOOTBALL IN THE TOWN WAS 1904, HOWEVER IT IS CERTAIN THAT THE GAME WAS PLAYED FOR A NUMBER OF YEARS BEFORE THAT. IN THOSE EARLY 1900S, STOTFOLD SIDES PLAYED IN THE BIGGLESWADE AND DISTRICT LEAGUE. THIS WAS FOLLOWED BY A SPELL OF NEARLY 30 YEARS IN NORTH HERTS FOOTBALL. THE FIRST RECORD OF A TROPHY BEING WON WAS 1911 WHEN POTTON WERE BEATEN 1-0 IN THE BIGGLESWADE AND DISTRICT CHAMPIONSHIP. STOTFOLD FC WAS OFFICIALLY FOUNDED AFTER WW2 IN 1946. IN 1951 WE JOINED THE SOUTH MIDLANDS LEAGUE DIVISION 2 AND IN 1953 WERE PROMOTED TO DIVISION 1. UP UNTIL 1965 OUR HOME GROUND WAS LOCATED AT HITCHIN ROAD RECREATION GROUND AND THE CLUB THEN PURCHASED AND DEVELOPED A MEADOW NAMED ROKER AND THE GROUND WAS APTLY NAMED ROKER PARK WHICH WE OCCUPIED FOR 54 YEARS. THE CLUB REMAINED IN THE SOUTH MIDLANDS LEAGUE FOR OVER 30 YEARS WINNING PROMOTION TO THE PREMIER LEAGUE IN 1955 AND WINNING THE CHAMPIONSHIP IN 1980. PHIL PATEMAN TOOK OVER FROM IAN ALLINSON STEPPING UP AFTER MANAGING THE RESERVES TO LEAGUE CHAMPIONS AND BEDS INTERMEDIATE SUCCESS. DURING 1998-2001 UNDER HIS CHARGE THE CLUB WON THE BEDS SENIOR AND PREMIER CUPS, UCL LEAGUE CUP, AND THE HINCHINGBROOKE CUP. THE CLUB ALSO REACHED THE LAST 32 OF THE FA VASE AND THE 3RD QUALIFYING RD OF THE FA CUP. PHIL STEPPED DOWN TO BECOME CHAIRMAN IN 2001.





THE EARLY 2000S SAW CHALLENGING TIMES FOR STOTFOLD CLUB AFTER GAINING JUST 11 POINTS FROM 17 LEAGUE GAMES AND SOME HEAVY DEFEATS IN SEASON 2006/7. A PARTNERSHIP OF IAN ALLISON AND IAN DONNELLY TOOK OVER AND WITH THE CLUB STARING RELEGATION IN THE FACE, IAN RECRUITED SEVERAL SENIOR PLAYERS, AND THE CLUB HAULED THEMSELVES OUT OF THE BOTTOM TWO, WINNING 8 OF THE LAST 10 GAMES. DURING THE SUMMER OF 2007, THE SQUAD STRENGTHENED FURTHER, CULMINATING IN THE MOST SUCCESSFUL SEASON IN THE CLUB'S HISTORY. BOTH FIRST AND SECOND TEAM SQUADS WON THEIR RESPECTIVE LEAGUE AND COUNTY CUP COMPETITIONS, (THE FIRST CLUB AND TO DATE ONLY ONE TO DO SO), WITH THE SECOND TEAM UNDER JOHN PHILBIN REMAINING UNBEATEN IN THE LEAGUE.

THE 2010S SAW THE CLUB MOVE BACK FROM THE UNITED COUNTIES LEAGUE TO THE SPARTAN SOUTH MIDLANDS LEAGUE IN 2010/11. IN SEASON 2012/13 GORDON BICKERSTAFF STOOD DOWN AND STEVE YOUNG WAS APPOINTED AS MANAGER SUPPORTED BY ROY RYALL. AFTER ANOTHER POOR START THE FIRST TEAM SECURED A RESPECTABLE MID-TABLE POSITION. STEVE PROMOTED FROM WITHIN THE CLUB, MICHAEL PARKIN AND MATT ENDERSBY STEPPING UP. THE FIRST TEAM TURNED THEIR SEASON AROUND FROM BEING 3RD FROM BOTTOM OF THE SSML PREMIER DIVISION WITH JUST 18 POINTS AT XMAS, TO THREE CUP FINALS AND A SEMI-FINAL PLACE IN ANOTHER. THEY ALSO MOVED AWAY FROM THE FOOT OF THE TABLE WITH A FURTHER 29 POINTS IN THE SECOND HALF OF THE SEASON. THE MID-2010S PRESENTED A CHALLENGE AND FOLLOWING STEVE'S RESIGNATION IN JANUARY 2015, ROB BATES STEPPED UP AND HE MANAGED TO MOULD A TEAM TO STAVE OFF RELEGATION FROM THE PREMIER LEAGUE AND FINISH A CREDITABLE 16TH. REVISED PLANS WERE DRAWN UP WHEN AN OFFER TO BUILD 60 PROPERTIES ON ROKER PARK WAS ACCEPTED IN RETURN FOR A STADIUM BEING BUILT FOR US.

THE CLUB COMPLETELY RESTRUCTURED WITH A MERGER OF SENIOR & JUNIOR CLUBS WITH AN ONGOING PROGRAM OF INCLUSIVE FOOTBALL FOR A CHARTER STANDARD CLUB COMPRISING OF MORE THAN 60 TEAMS AND 700 PARTICIPANTS. SO, TO THE 2020S SUCCESS OFF THE FIELD BEING AS IMPORTANT AS ON IT. IN THIS REGARD WE WERE DELIGHTED THAT OUR FORMER PLAYER LUKE GREGSON AGREED TO BE OUR MANAGER AFTER A WONDERFUL SPELL AT BALDOCK. HE BOUGHT WITH HIM JIM STERLING AND REBUILT THE SIDE. AFTER A SLOW START THE EAGLES WENT ON A FANTASTIC RUN OF FORM WINNING 14 CONSECUTIVE LEAGUE GAMES AND SEEMINGLY NAILED ON FOR PROMOTION BEFORE COVID-19 NULL AND VOIDED THE SEASON. HOWEVER NOT BEFORE WE WON THE BEDS SENIOR TROPHY BEATING STEVINGTON 2-0 IN THE FINAL. DESPITE, THE DISAPPOINTMENT 2020 MARKED A LANDMARK FOR THE CLUB WHEN WE MOVED TO OUR NEW ROKER PARK JSJ STADIUM. THE £2M STEP 4 FACILITY OPENED ITS DOORS ON FEB 8TH WITH A HOME GAME AGAINST SHEFFORD & CAMPTON, AND A CROWD OF 644 WITNESSED A SUPER GAME WITH THE EAGLES WINNING 5-3.

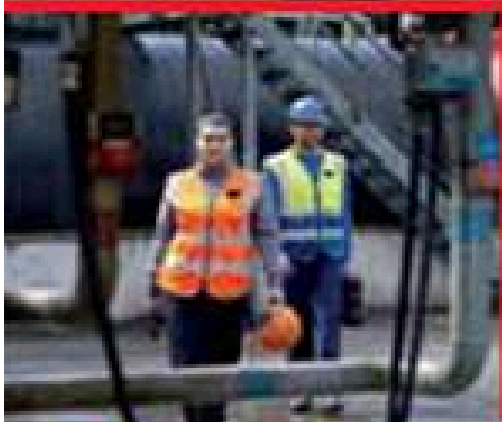


AFTER 20 YEARS AS CLUB CHAIRMAN PHIL PATEMAN STEPPED DOWN AT THE END OF SEASON 2020/21 WITH HIS VICE-CHAIRMAN OF SOME 4 YEARS ROB PARKIN AGREEING TO TAKE ON THE ROLE OF CHAIRMAN. WE STARTED THE NEW 2021/22 SEASON FULL OF OPTIMISM HAVING BEEN RE-STRUCTURED OFF THE FIELD AND IN THE RE-STRUCTURED DIVISION 1 UNDER FORMER PLAYERS BRETT AND PAUL DONNELLY. JOINING BRETT'S MANAGEMENT TEAM IS UEFA B LICENCE AND FA COACH MENTOR EDDIE MCLOUGHLIN. THE MANAGEMENT TEAM ARE COMPLETED BY MICHAEL PARKIN (GOALKEEPING COACH), RYAN JEFFERIES (PHYSIO) AND ROY RYALL WITH JON LITTLE, SEAN LYNESS AND DARREN CLARKE LOOKING AFTER THE DEVELOPMENT/U18 SIDES. THE SEASON SAW UNPRECEDENTED SUCCESS WITH THE FIRST TEAM WINNING DIVISION 1 AND PROMOTION BACK TO THE SOUTH MIDLANDS PREMIER DIVISION, THE DEVELOPMENT TEAM WINNING DIVISION 1 OF THE BEDS COUNTY FOOTBALL LEAGUE AND PROMOTION TO PREMIER DIVISION AND THE U18S WINNING THE NEMEAN DIVISION OF THE SOUTHERN COUNTIES SOUTHERN FLOODLIT LEAGUE.



WE STARTED SEASON 2022/23 WITH THE SAME MANAGEMENT TEAMS FOR THE FIRST AND DEVELOPMENT TEAMS AND THE CLUB HAD THEIR FIRST EVER WOMEN'S TEAM UNDER THE MANAGEMENT OF TOM OLNEY AND BECCA LIGHTFOOT PLAYING IN THE BEDS AND HERTS WOMAN'S FOOTBALL LEAGUE. A NEW MANAGEMENT TEAM OF STUART LOPEZ AND SCOTT CRETTON TOOK OVER THE U18 TEAM. UNBELIEVABLY THE FIRST TEAM SECURED BACK-TO-BACK PROMOTIONS FINISHING RUNNERS UP IN THE SSMFL PREMIER DIVISION AND WINNING THE PLAY OFF AT DEREHAM TOWN 2-0. THE WOMEN'S TEAM SECURED PROMOTION TO THE PREMIER DIVISION OF THEIR LEAGUE IN THEIR FIRST SEASON.

SEASON 2023/24 SAW THE 1ST TEAM PLAY AT STEP 4 IN THE SOUTHERN LEAGUE CENTRAL DIVISION 1 FOR THE FIRST TIME IN THE CLUB'S HISTORY. IN A TOUGH LEAGUE WE WERE DELIGHTED TO FINISH A VERY CREDITABLE 7TH. THE DEVELOPMENT TEAM FINISHED RUNNERS-UP IN THE BEDS COUNTY FOOTBALL LEAGUE, GAINING PROMOTION TO SPARTAN SOUTH MIDLANDS DIVISION 1 A GREAT ACHIEVEMENT FOR A CLUB TO HAVE TEAMS AT STEP 4 AND STEP 6. THE WOMEN'S TEAM FINISHED THIRD IN THEIR FIRST SEASON IN THE PREMIER DIVISION AND THE U18S FINISHED THIRD IN THE DELPHIAN DIVISION. SADLY, WE SAW BRETT AND EDDIE MOVE ON TO TAKE OVER MANAGEMENT ROLES AT HITCHIN TOWN TOWARDS THE END OF THE SEASON. WE THANK THEM FOR ALL THE SUCCESS THEY BROUGHT TO THE CLUB.



mvi

corporate merchandise
limited

01462 819507

www.mvi-ltd.co.uk

The smart choice for
professional workwear



"We have been using Ryalls for years. They have a good range of landscaping products as well as all the usual hardware. Cheaper than other local places. Very good free delivery. Highly recommended."

M. J. Ryall
Building Supplies Ltd.
Suppliers of Timber and all Building Materials

MJ RYALL ARE ONE OF THE LEADING BUILDING SUPPLIERS IN THE AREA, DEALING IN ALL TYPES OF MATERIALS FOR PROJECTS LARGE AND SMALL.

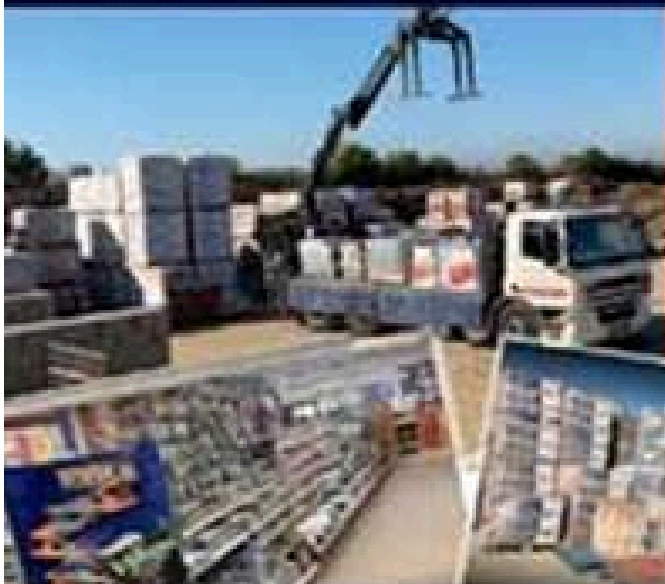
If there is a special item you require that we can order this in - just contact us today!



01462 730169

We have been trading for over 30 years and we still strive to provide the same friendly and practical service today as was offered on day one.

We always go that extra mile to help our customers



PAVING

AGGREGATES

BRICKS

GARDEN STONES

PAINTS

FENCING

ROCKERY STONES

SAFETY

CALOR GAS

DRAINAGE

TURF (TOPSOIL)

TIMBER

LOGS & COAL

FITTINGS

ELECTRICAL

COMPETITIVE PRICES
DELIVERED FREE LOCALLY
TRADE DISCOUNT

www.mjryall.co.uk
info@mjryall.co.uk

M. J. Ryall Building Supplies Ltd
100-102 Norton Road, Stotford, Hitchin SG5 4PG

Delivering to: Letchworth, Hitchin, Stevenage, Baldock, Bishops Cleeve & surrounding areas!



THE VISITORS



NEW BRADWELL

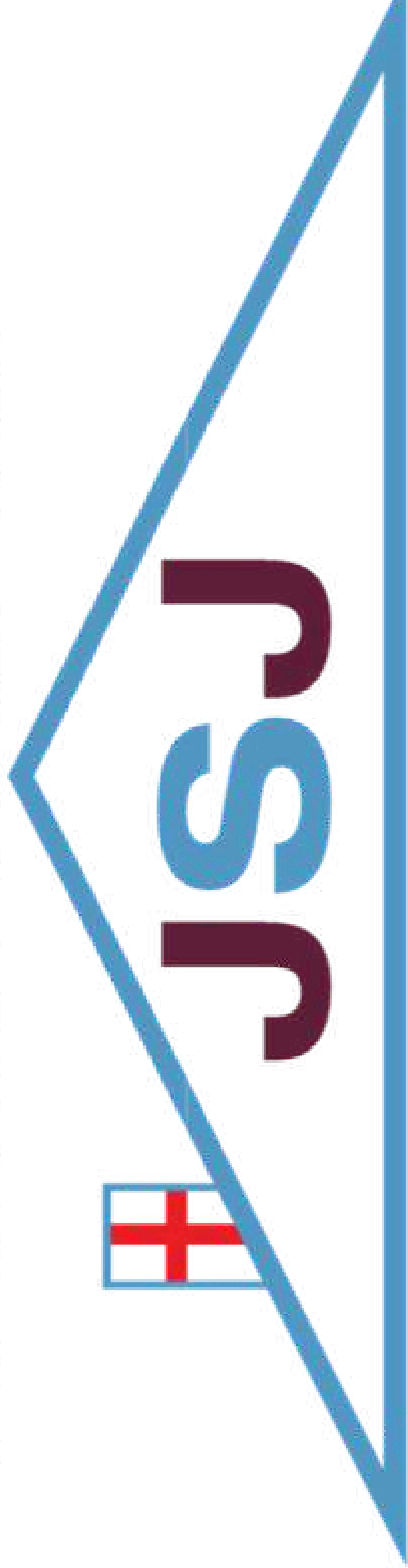
NEW BRADWELL ST PETER FC WAS FORMED IN 1902 AND WE CURRENTLY PLAY IN DIVISION 1 OF THE SPARTAN SOUTH MIDLANDS FOOTBALL LEAGUE. THE CLUB HAS A LONG HISTORY AND HAS PLAYED AT A NUMBER OF LOCATIONS IN NEW BRADWELL AND THE SURROUNDING AREAS OVER THE YEARS. IN 1969 AFTER MOVING TO BRADWELL RECREATION GROUND THEY INVITED THE CRICKET CLUB TO JOIN THEM IN BUILDING A SPORTS PAVILION. SINCE THEN WE HAVE WON THE SOUTH MIDLANDS LEAGUE DIVISION ONE TITLE IN 1976/77 AND AGAIN IN 1983/84 AND IN THE EARLY 80S GRANTED "SENIOR" STATUS.

AFTER A NEWLY FORMED VICE-PRESIDENTS CLUB BEGAN FUNDRAISING, FLOODLIGHTS WERE INSTALLED IN 1998. THEIR INSTALLATION AND WINNING THE SPARTAN SOUTH MIDLANDS SENIOR DIVISION ALLOWED THE CLUB TO BE PROMOTED TO THE SPARTAN SOUTH MIDLANDS PREMIER DIVISION THE FOLLOWING SEASON. IN THE 1999/2000 SEASON NEW BRADWELL ST PETER FC WON THE BERKS & BUCKS SENIOR TROPHY BEATING LOCAL RIVALS MILTON KEYNES CITY IN THE FINAL. IN 2002/2003 THE CLUB CELEBRATED ITS CENTENARY SEASON. THE 2010/2011 SEASON BROUGHT FURTHER SUCCESS IN SECURING THE BERKS & BUCKS INTERMEDIATE TROPHY.

FOLLOWING ISSUES WITH THE SPONSORS AND MANAGER AT THE END OF THE 2016/17 SEASON THE CLUB TOOK A ONE YEAR LEAVE OF ABSENCE FROM MEN'S FOOTBALL IN ORDER TO RE-GROUP AND SET UP FOR THE 2018/19 SEASON. DURING THE 2017/18 SEASON ANOTHER MK SPARTAN SOUTH MIDLANDS SIDE LOUGHTON MANOR FC MOVED IN TO BECOME TENANTS AT NEW BRADWELL ST PETER. THE LINK BETWEEN THE TWO CLUBS BECAME VERY STRONG OVER THE REST OF THE SEASON AND DURING THE SUMMER AFTER CONSULTATION WITH THE FA AND THE LEAGUE LOUGHTON MANOR RENAMED THEMSELVES NEW BRADWELL ST PETER FC WITH THE COMMITTEE, MANAGEMENT AND PLAYERS MOVING ACROSS TO FORMALLY BECOME NEW BRADWELL.

THE NEXT FEW YEARS SAW A NUMBER OF CHANGES IN MANAGEMENT LEADING UP TO 2022 WHEN JAMIE BURROWS TOOK THE HELM. WITH JAMIE'S PASSION AND EXPERIENCE CAME THE HOPE OF PROMOTION, AFTER 3 YEARS OF HARD WORK BEHIND THE SCENES GETTING THE GROUND GRADING UP TO STANDARDS WITH THE HELP OF THE COMMITTEE ALL THE TEAM NEEDED TO DO WAS WIN THE DIVISION. WHICH WAS ACHIEVED AT THE END OF 2024/25 SEASON BRINGING THEM UP TO SSMFL DIV 1 AT STEP 6. THE CLUB LOOK FORWARD TO THIS NEW SEASON WITH EXCITEMENT AND CANT WAIT TO SEE WHAT THE FUTURE BRINGS.

**Proud Sponsors of
Stotfold Football Club**



Roofing Ltd

A TRAVELLERS TALE

BY BRIAN BUCK

(14,394) TUESDAY 8 TH JULY 2025. LETCHWORTH GARDEN CITY EAGLES 3 ST
MARGARETSBURY 1 (FRIENDLY MATCH) ATT 70 APPROX.

TONIGHT I WAS BACK HERE FOR MY SECOND VISIT OF THE SEASON WITH FINGERS CROSSED, HOPING TO AVOID A CONSECUTIVE NIL-NIL DRAW. BUT AFTER THAT RATHER PLACID ENCOUNTER, THIS GAME WAS FAR MORE PHYSICAL, WITH MOST OF IT COMING FROM THE VISITORS, NONE MORE SO WHEN A NASTY TACKLE SAW AN EAGLES PLAYER CARRIED OFF THE PITCH BY HIS TEAMMATES. THE TACKLE WARRANTED A YELLOW CARD AT LEAST, BUT THE RATHER TOO LENIENT REF, FOR MY LIKING, WASN'T INTERESTED. FOOTBALL WISE, FOR A LONG WHILE THE GAME WAS ABOUT AS EXCITING AS IT WAS HERE ON THE PREVIOUS TUESDAY, AS THERE SEEMED TO BE NO LIKELIHOOD OF WITNESSING A GOAL. HOWEVER, ON 41 MINUTES EAGLES DID SCORE WHEN FROM ALMOST ON THE LINE, THE SCORER FORCED HOME A BALL PLAYED INTO HIM. JUST A SMALL CHANCE THAT THE DEFENDER MARKING HIM GOT THE FINAL TOUCH AS THEY BOTH STRETCHED FOR THE BALL, BUT NO ONE REALLY CARED EITHER WAY. THEN, ON 45 MINUTES EAGLES CLAIMED A SECOND GOAL, WHICH CAME WHEN A PLAYER THREW HIMSELF TO GET ON THE END OF A CORNER TO POWERFULLY HEAD HOME FROM ABOUT SIX YARDS OUT AND TEMPORARILY INJURED HIMSELF IN THE PROCESS. IN THE SECOND HALF ST MARGARETSBURY CHANGED MOST OF THEIR SIDE AND ALSO THEIR SHIRT COLOURS, FROM RED TO YELLOW. ALTHOUGH THEY WERE THE SEEMINGLY YOUNGER SIDE, THEY PLAYED WITH GREATER ENTHUSIASM AND CREATIVITY THAN THE PLAYERS THEY REPLACED DID. HOWEVER ON 62 MINUTES THEY CONCEDED A SPOT KICK WITH A WILD CHALLENGE, WHICH THIS TIME SAW THE REF DEEM IT SERIOUS ENOUGH TO BOOK THE CULPRIT. THEN ON 72 MINUTES HE WON EVEN FEWER FRIENDS WHEN HE GAVE ST MARGARETSBURY THEIR OWN SPOT KICK AFTER ONE OF THEIR PLAYERS THREW HIMSELF TO THE FLOOR LONG AFTER A TACKLE HAD GONE IN IN THE VAIN HOPE THAT THE REF MIGHT FALL FOR IT AND HE DID! BY THE END THIS HAD BECOME AN ENTERTAINING GAME WITH EAGLES IMPROVING ON THE PREVIOUS WEEK'S STARTER. IT JUST GOES TO SHOW HOW GOALS ARE IMPORTANT IN GAMES, WHICH I SUPPOSE IS AN OBVIOUS STATEMENT TO MAKE. I ALSO KNOW THAT WHILST WORKING ON ONE'S CREATIVITY IS NOT TOP PRIORITY IN FRIENDLY MATCHES, IT DOES NEED TO BE ADDRESSED BEFORE THE SEASON PROPER STARTS, BUT TO ME MANY CLUBS DON'T SEEM TO BOTHER THESE DAYS!





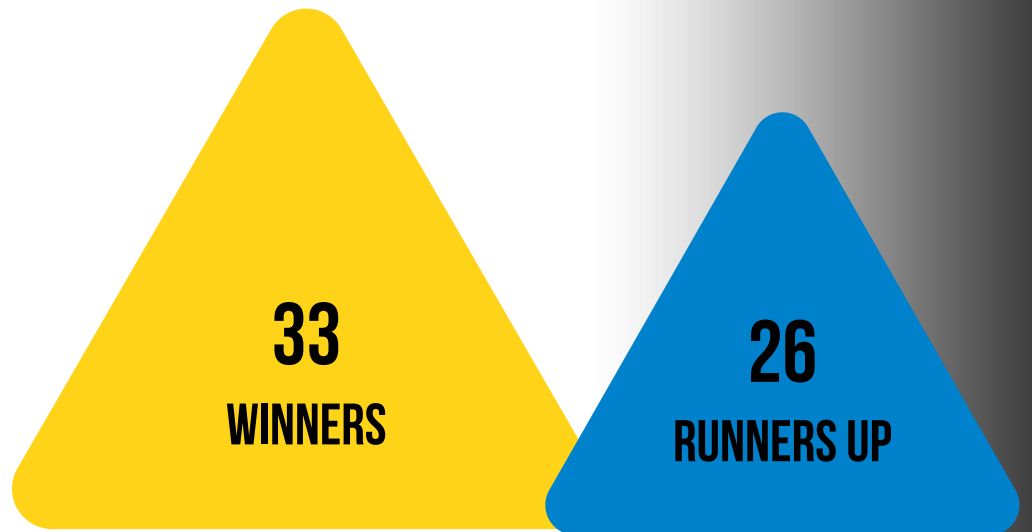
STATS

AND

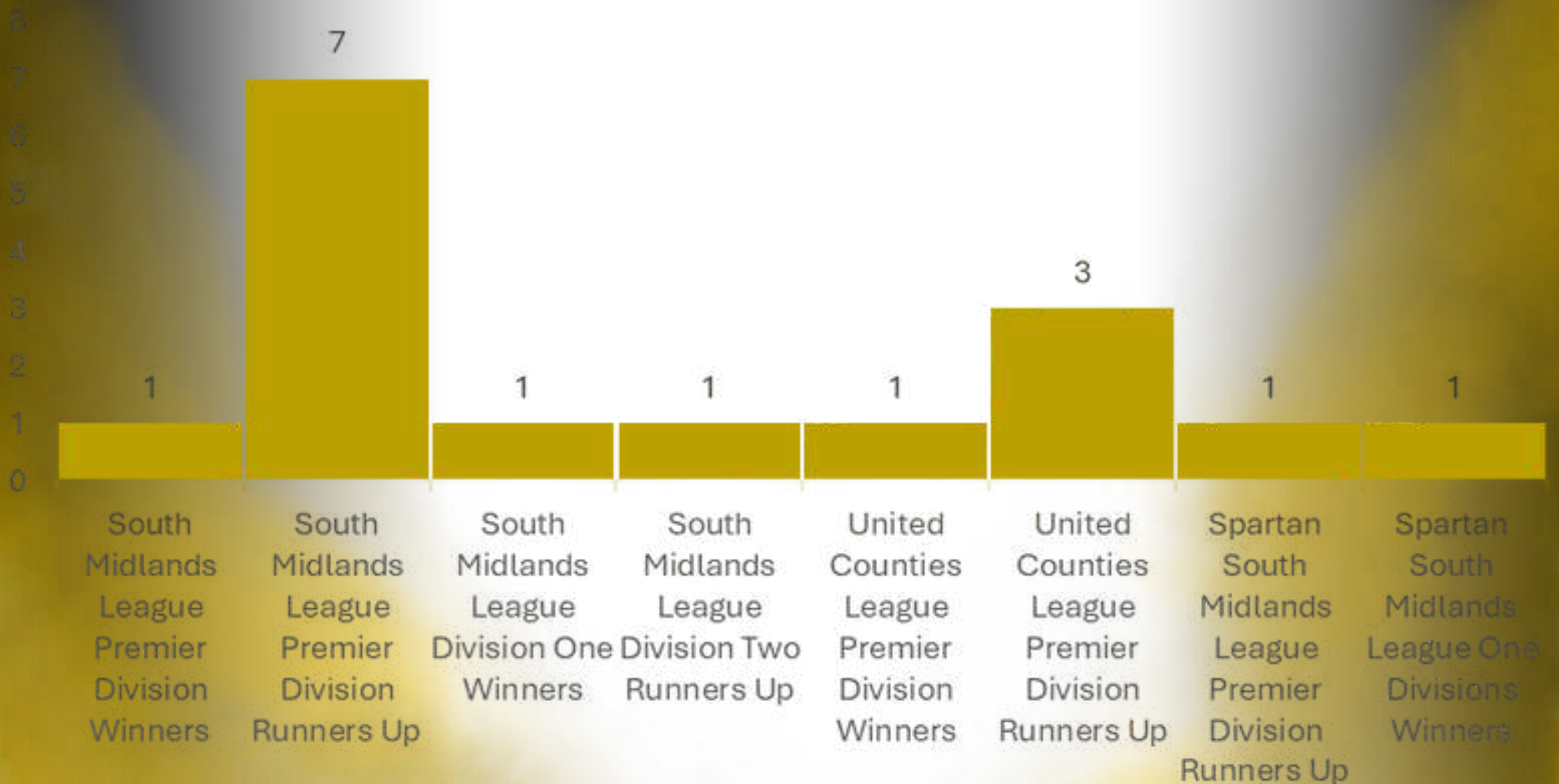
FACTS

#up the fold

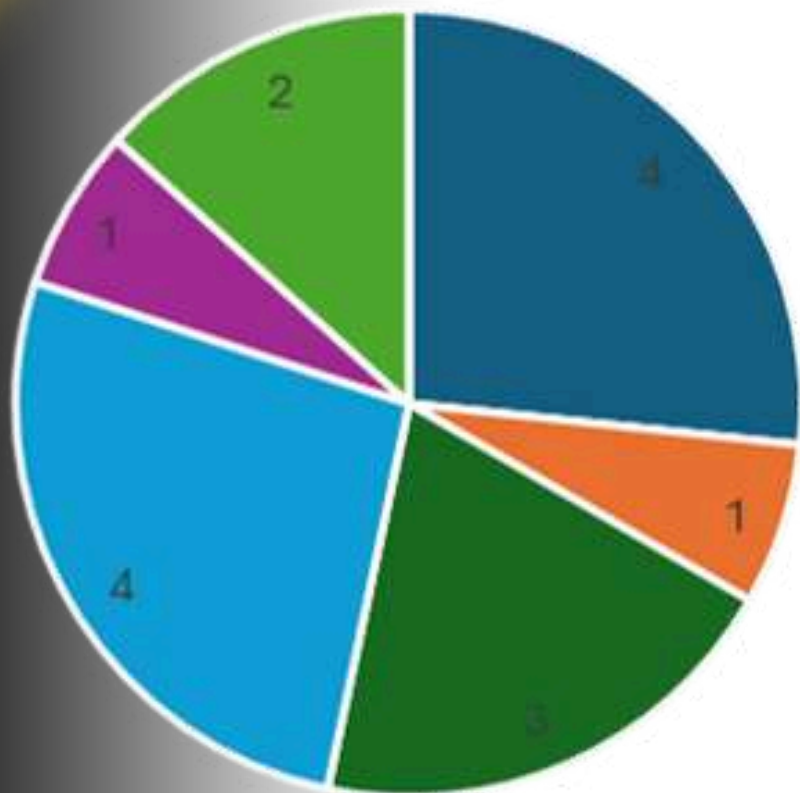
CLUB HONOURS



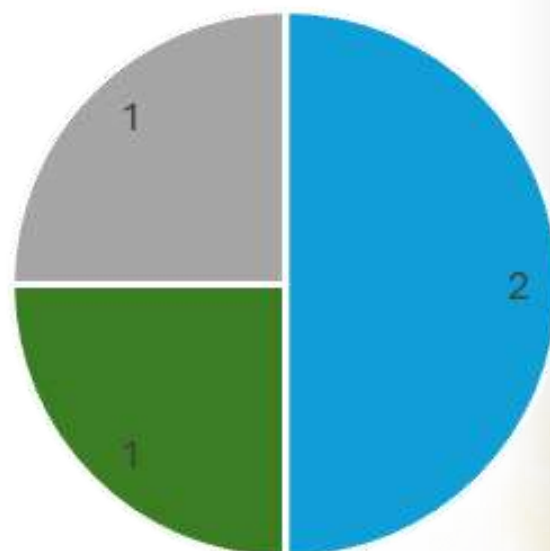
LEAGUE HONOURS



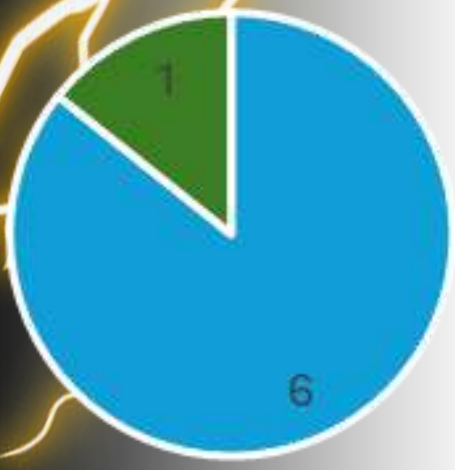
DOMESTIC HONOURS



- Bedfordshire County Football Association Senior Cup Winners
- Bedfordshire County Football Association Senior Cup Runners Up
- Bedfordshire County Football Association Premier Cup Winners
- Bedfordshire County Football Association Intermediate Cup Winners
- Bedfordshire County Football Association Intermediate Cup Runners Up
- Bedfordshire County Football Association Senior Trophy Winners

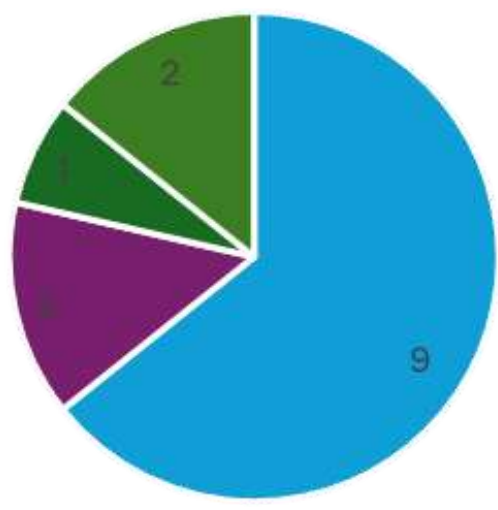


- Spartan South Midlands League Challenge Trophy Runners Up
- Spartan South Midlands League Senior Floodlit Cup Runners Up



■ Biggleswade Knock-Out Cup Winners

■ Biggleswade Knock-Out Cup Runners Up



- North Bedfordshire Charity Cup Winners
- United Counties League KO Cup Winners
- South Midlands League Challenge Trophy Winners
- Southern Combination Cup Winners



■ Hinchingsbrooke Cup Winners

■ Hinchingsbrooke Cup Runners Up



BAL & CO. MOTOR CARE

CAR SALES

Quality used cars & vans supplied.

Excellent after sales care, our warranties cover both parts & labour.

MECHANICAL

Motor vehicle servicing and general repair work undertaken, any make or model.

BODYWORK

Accident repair and insurance work specialists.

**2 Arlesey Road, Stotfold, Hitchin, Herts
SG5 4HA**

Formerly Cramps Garage

Sale 01462 732400

Services and Bodywork 01462 731500

TODAYS SQUADS



MANAGER: JON LITTLE

GURJOSH DHESI (GK)

BRADLEY SHAW

HARRY BUCKLEY

ADAM TURNER

CHARLIE CANE

JONNY CRAWFORD

JOE FANTOM

TOM GODDARD

ALFIE GARDINER

BILLY LITTLE

CHARLIE BEDFORD

SAM HOPE

HARRY SMITH

CHARLIE SCOTT

CHARLIE MALLET

CALLUM MULLINS

AARON HECTOR

OWEN HAYNES

DARAI LONG

TAYLON BROOKES

COREY LYNESS

DOMINIK ROBERTSON

EMMANUEL KUSI

DYLAN COLLETTI

MANAGER: JAMIE BURROWS

TED BROWN

SANTINO CILIBERTI

LIAM CLARKE

JACK CLARKSON

MATTHEW CULLIS

MASON DAVIS

ALFIE GASPAR

RYAN HANLEY

DOMINIC HORN

BEN WILSON

DEXTER WOOLWARD

HUGO CAMPUS

MASON COULING

ZAK DOWSE

JAKE STUBBS

JESSE HORN



ASSISTANT
NEWTON GORDON



REFEREE
LEE GRIMSEY



ASSISTANT
LUKE ADDIS



UP THE

FOLD